



## The Territory Lifestyle

- Relaxed outdoor lifestyle
- A uniquely diverse and multicultural society
- Richly blessed with stunning natural environments
- Modern towns – with good schools – an ideal environment for families
- Excellent standards in health care and education
- Some of the most affordable housing in Australia
- A wealth of sporting and recreation facilities
- The most youthful population in the country



## The Territory's Competitive Advantages

- Low-tax business environment
- Australia's strongest economic growth\*
- Located strategically near large Asian markets
- Emerging international gas hub
- Competitive real estate values
- Strong and competitive construction sector
- Flexible and dynamic labour force

\* Source: ABS

## About Australia's Northern Territory

Area	1,346,200 km <sup>2</sup>
Capital	Darwin
Sea	10,950 km of coastline
Total population	206,700
Darwin	71,000
Palmerston	26,000
Darwin Rural	17,000
Alice Springs	27,000
Katherine	9000
Nhulunbuy	3800
Tennant Creek	3100
Median age	30.9
Annual growth rate	1.6%

	Darwin	Alice Springs
Average annual rainfall	1714 mm	285 mm
Average daytime temperature		
May - Oct	31.6°C	23.9°C
Nov - Apr	32.2°C	33.3°C

## The Northern Territory



## Government and Constitutional History

The Northern Territory has a Westminster style of government with no upper house. The Head of State is the Administrator, rather than the Governor as in other Australian jurisdictions.

The Legislative Assembly of the Northern Territory is the Territory's Parliament. The Assembly comprises 25 members, led by the Chief Minister and eight ministers.

### History

- 1863 British Government vested control of NT in the colony of SA.
- 1864 Territory's first Government resident, Colonel Boyle Travers Finniss was appointed.
- 1869 Palmerston (now Darwin) was established as a permanent settlement.
- 1901 Federation of Australia.
- 1910 Australian Parliament passed the NT Acceptance Act.
- 1911 SA relinquished control over the NT to the Commonwealth Government.
- 1942 First bombing raid on Darwin, 19 February.
- 1974 Cyclone Tracy destroyed Darwin on Christmas Eve. Due to mass evacuation, Darwin's population was reduced from 47,000 to 11,000.
- 1978 Northern Territory granted self-government.

## Employment

Northern Territory	April 2007
Employed persons	101,800
Unemployed persons	4,500
Unemployment rate (%)	4.3%
Participation rate (%)	69.4
Labour force	106,360

Source: ABS

## Prices and Wages

Darwin CPI 4% (March 2007)

In the five years to 2010-11 the Territory's inflation rate is forecast to average 2.9%.

Source: Access Economics

Average weekly earnings per full-time employee

February 2007 \$1092.40

Source: ABS

the Territory  
The difference is opportunity

1800 006 282

www.theterritory.com.au

While all reasonable efforts have been made to ensure that the information contained in this publication is correct, the information covered is subject to change. The NT Government does not assume and hereby disclaims any express or implied liability whatsoever to any party for any loss or damage caused by errors or omissions.

## Economy

## Retail and Wholesale Trade

## Defence

## Tourism

## Mining and Energy

## International Trade

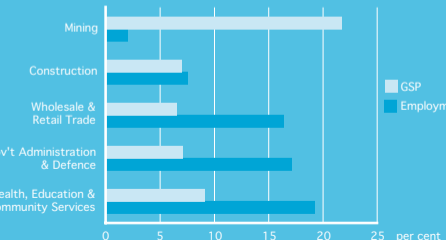


**Gross State Product (GSP)** is estimated to have increased by 7.2% in 2006-07 to \$12,300 million.

The Territory economy is forecast to grow by a further 3.7% in 2007-08 on the back of rising mineral and energy production.

Source: NT Treasury

Percentage of Total Gross State Product and Employment  
Five-year average to 2005-06



Retail and wholesale trade accounts for about 6% of Northern Territory GSP and 16% of all employed persons.

Territory retail turnover is estimated to have grown by 7.5% in 2006-07 on the back of a commodity boom, strong construction activity and record low unemployment.

Source: NT Treasury

## Rural Industries and Fisheries

The total value of rural industries and fisheries production is estimated to have increased by 12% in 2006-07 to \$539 million.

The Northern Territory contributes about 40% to Australia's live cattle exports. In 2006-07 cattle production was valued at \$232 million, while fisheries production was valued at \$144 million.

The number of defence personnel and their families in the Territory has grown from about 6200 in 1992 to an estimated 13,000 today.

Major defence activities underway include:

- Relocation of the Army's 1st Aviation Regiment, including an \$82 million building program at Robertson Barracks in Darwin.
- Construction of the \$65 million Bradshaw Field Training Area near Timber Creek.



- New Tiger reconnaissance helicopters, Abrams tanks and Armidale class patrol boats are being stationed in the Territory.

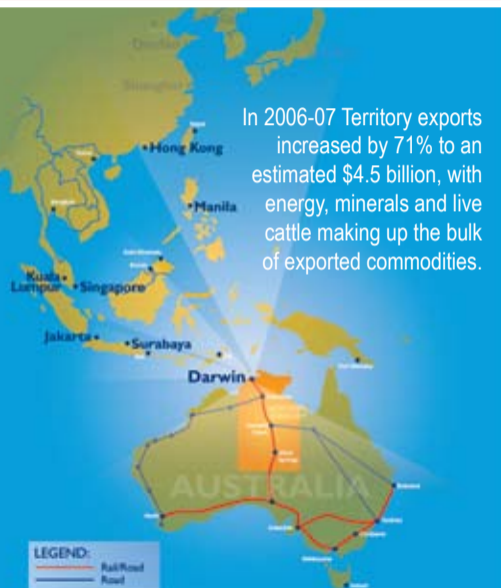


Around 1.4 million people visited the Territory in 2005-06. Holiday visitors accounted for 41% of all visitors, followed by business-related travel (22%) and people visiting friends and relatives (15%).

During this time, estimated visitor expenditure in the NT was \$1.55 billion. Tourism is more important to the Northern Territory than to any other state or territory, providing more than 14,000 direct and indirect jobs.

Mining is the largest industry in the Territory, contributing about 25% to the Territory's economy. There are around 5000 people employed in the mining, oil and gas industries, with mining being a major employer in regional areas. The Northern Territory's most significant mineral and energy resources include:

- Bauxite** – Australia's third-largest bauxite mine, near Gove
- Gold** – major operating mines in the Tanami Desert and Pine Creek areas
- Manganese** – world-scale operations at Groote Eylandt and Bootu Creek
- Zinc, Lead, Silver** – one of the world's largest known ore bodies, at McArthur River
- Diamonds** – prospective indicators for the North Australian Craton
- Uranium** – deposits at Ranger, Jabiluka and Koongarra
- Natural Gas** – onshore in the Amadeus Basin and world-class offshore reserves in the Timor Sea
- Oil** – onshore production at Mereenie and offshore in the Bonaparte Basin



# Australia's Northern Territory At a glance